

STUBBY FRONT BUMPER

18+/20+ JEEP WRANGLER JL & GLADIATOR JT

FBJL-11



TOOLS REQUIRED

- 13mm, 16mm Socket
- 19mm Deep Socket
- 13mm Wrench (2x), 17mm Wrench
- 6mm Allen Bit
- Trim Clip Tool

SKILL LEVEL

- Novice/Intermediate
- 2 persons

Little skill level required, you can easily install it by yourself however, additional help is required for removal and installation of bumpers.

TIME REQUIRED

- 3 Hours

Time to install this should take about three hours.

WARNINGS/CAUTIONS BEFORE STARTING INSTALLATION

Before you install this kit — Read and understand all instructions, warnings, cautions, and notes contained in this installation instruction guide. Consult your vehicle owner's manual for proper disconnection of electrical and lifting of vehicle if required for installation of this product.

This install may require some technical skills and knowledge of basic mechanical work. If you do not feel that you are capable of performing this install please take this product to a trained professional.

After reading this guide please contact us with any questions or concerns before installing product.
Customer Service: 855-680-9595

DV8 Offroad is not responsible for any bodily injury or harm to you or your vehicle as a result of an improper install.

Proper installation of this kit required knowledge of the factory recommended procedures for removal and installation of original equipment components. We recommend that the factory shop manual and any special tools needed to service your vehicle be on hand during the installation. Installation of this kit without proper knowledge of the factory recommended procedures may affect the performance of these components and the safety of the vehicle

- Always wear eye protection when operating power tools

Inspect all contents of this package to make sure product is not damaged and all installation hardware has been included. If parts are missing from kit, please be prepared to provide the following information

1. Name of purchase location
2. Bar Code on side of box
3. Date above bar code
4. Date inside box cover



INSTALLATION **MANUAL**

STEP 1 | *UNINSTALL OF FRONT BUMPER*

Using a push pin removal tool, remove the two push pins securing the plastic trim piece under the grille and behind the bumper.



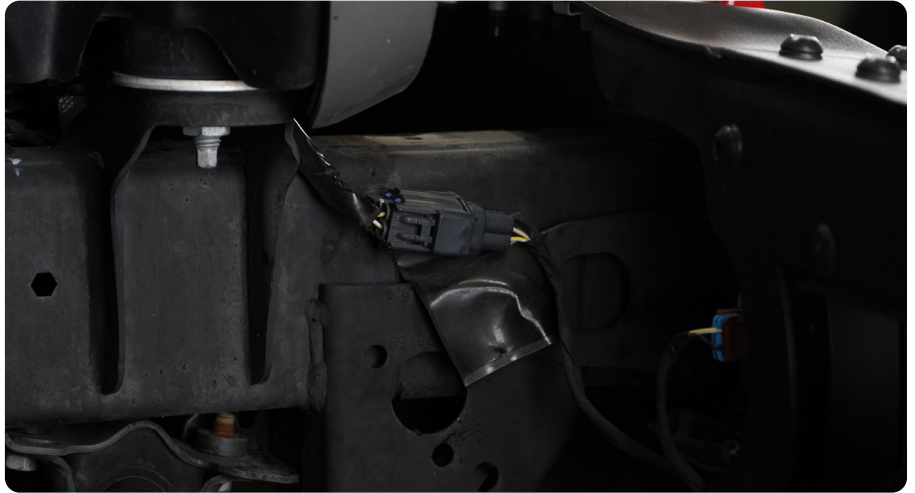
INSTALLATION MANUAL

STEP 2 | Using a 13mm socket, remove the seven bolts securing the skid plate to the vehicle, and set off to the side.



INSTALLATION **MANUAL**

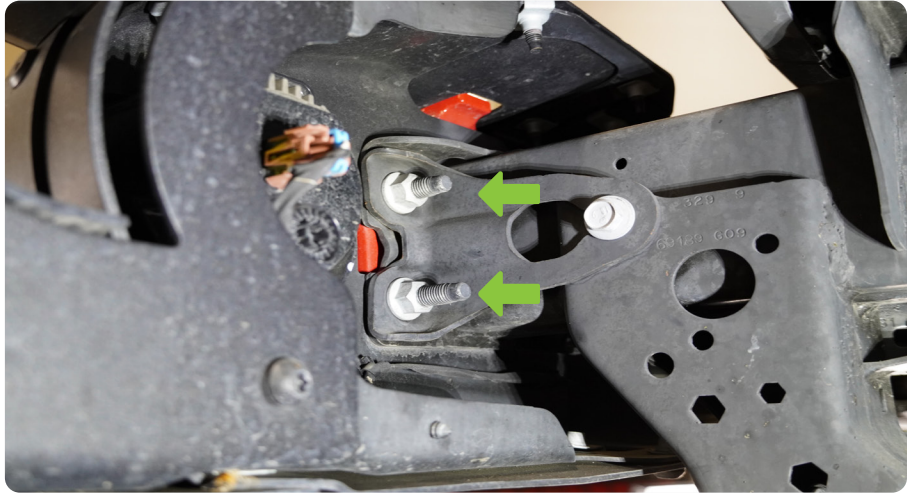
STEP 3 | Disconnect the fog lights by unplugging the wiring connectors located on passenger frame rail directly behind the bumper.



INSTALLATION MANUAL

STEP 4 | Using a 19mm deep socket, remove the eight nuts securing the bumper, located directly behind it. Once all nuts are removed, pull bumper from the vehicle and set off to the side.

Note: Once nuts are removed, bumper can become loose and fall. Ensure bumper is secure. Assistance is recommended to prevent injury and damage to the vehicle or product.



STEP 5 | At this point, frame rails should be visible and the vehicle should be ready for installation of an aftermarket bumper.



INSTALLATION MANUAL

Begin by unpacking all items and inspecting for missing pieces or damage. If you have any concerns, please contact the company the product was purchased from. Extra hardware may be included with the hardware kit.

HARDWARE INCLUDED

- (8) M8x25 Hex
- (2) M8x20 Hex
- (10) M8 Lock Nuts
- (20) M8 Flat Washers
- (2) M10x40 Allen
- (10) M10 Flat Washers
- (6) M10 Spring Washers
- (6) M10 Nuts



STEP 6 | Install the fairlead mount onto the bumper using (4) of the provided M8x25 hex bolts using a 13mm socket and wrench.

Mount your chosen winch fairlead using the hardware supplied with the fairlead.

Note: For this install we choose the DV8 Pocket Fairlead for synthetic rope winches(WBPF-01).



STEP 7 | If you are installing a winch, mount the winch to the bumper winch plate at this time using the hardware provided with the your chosen winch.

Note: For this install we choose the DV8 12k LB winch with synthetic rope(WB12SR).



INSTALLATION MANUAL

STEP 8 | If you are not installing a light bar, skip ahead to step 10.

Loosely install the light bar mounting bracket onto the cross brace using the (2) provided M8x20 hex bolts (This is the shortest/smallest hardware provided in the kit).



STEP 9 | Install the light bar to the mounting bracket using the hardware that was provided with the light.

With the light bar installed, center the mounting brackets and secure the M8 hardware using (2) 13mm wrenches.



INSTALLATION MANUAL

STEP 10 | Test fit the cross brace/light bar prior to securing the cross brace and determine if the light needs adjustment.

Once satisfied with the fitment, secure the cross brace to the bumper using (4) of the provided M8x25mm hex bolts with a 13mm wrench and socket.

The light bar mount will sit on the inside of the brackets on the bumper.



INSTALLATION MANUAL

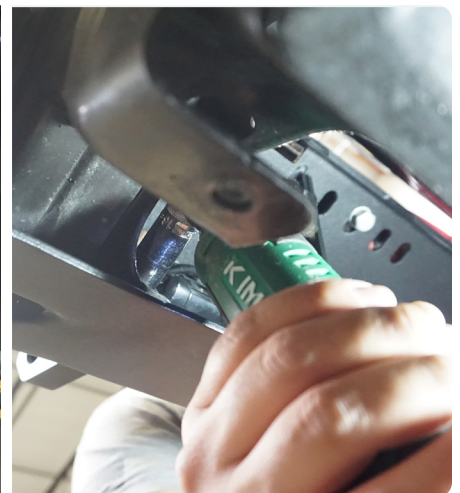
STEP 11 | With assistance, lift the bumper to the vehicle and secure it to the vehicle using the (6) provided M10 Nuts hardware with a 17mm socket.

For the lower outer corners, we provide Allen head hardware for a cleaner look. Use a 6mm Allen bit and 17mm wrench to secure the (2) M10 Allen head and (2) M10 Nylon Lock Nuts.

Note: Assistance is recommended prevent injury and damage to the product and vehicle.



STEP 12 | Ensure the (6) main bumper stud nuts are torqued to 60ft lbs. Double check fitment and all hardware is secure.



INSTALLATION MANUAL

STEP 13 | Congrats! You are finished with the install of the 18+/20+ JL/JT Wrangler/Gladiator Stubby Front Winch Bumper!

